

ASHOKA



What is Ashoka ?

- The **largest network** of social entrepreneurs worldwide
- A platform for people dedicated to **changing the world**



THE VISION

Ashoka envisions an **Everyone A Changemaker™** world:

One where all individuals can respond quickly and effectively to urgent social problems and drive change.

HOW WE DO IT

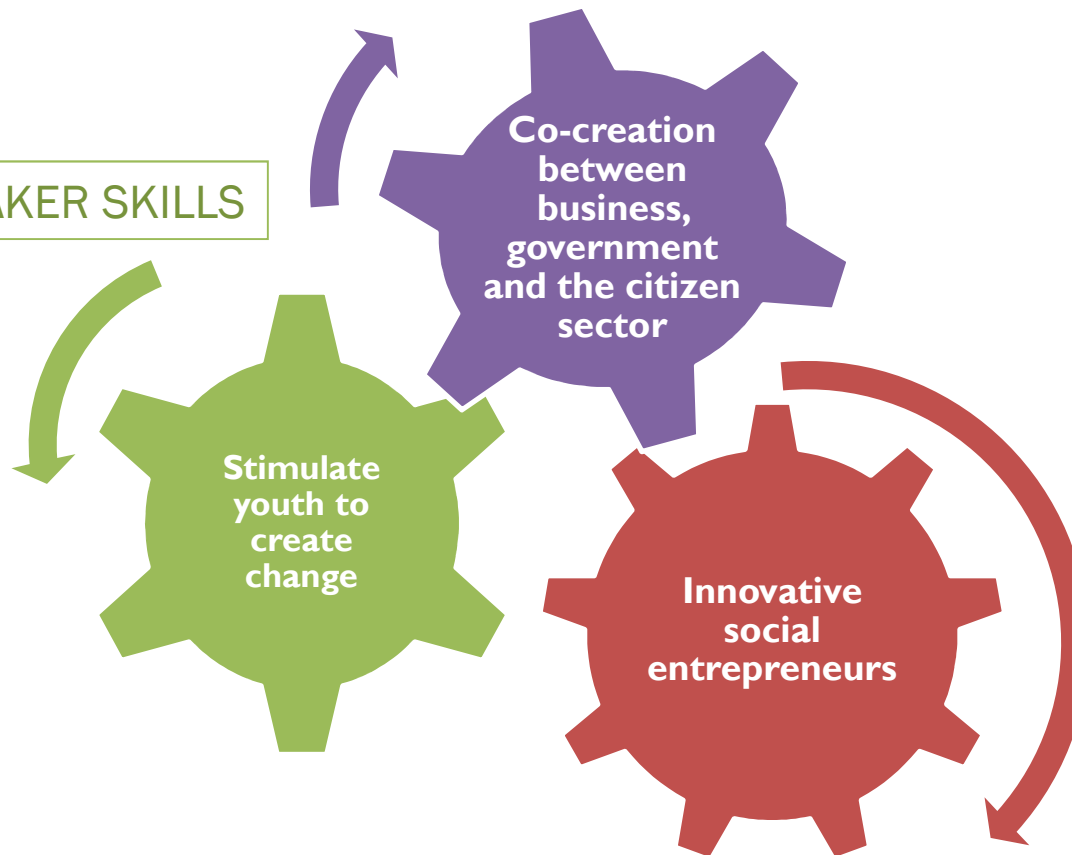
Ashoka finds and supports the **best social innovations**, mobilizes thousands of people to create change, and enables businesses, the media, policymakers, and social entrepreneurs to **collaboratively create global impact.**



STRATEGY

2) CHANGEMAKER ALLIANCES

3) CHANGEMAKER SKILLS



1) CHANGEMAKER LEADERS

What is a social entrepreneur?

“

Social entrepreneurs are unreasonable people. They are the mavericks who refuse to accept the status quo.

They look at the world, are dissatisfied with what they see, and resolve to change it.

They are both dreamers and doers; imagining a brighter future and setting about making that dream into a reality.

”

— David Bornstein



David Green, Ashoka Fellow 2002
Project Impact



Bart Weetjens, Ashoka Fellow 2006
APOPO

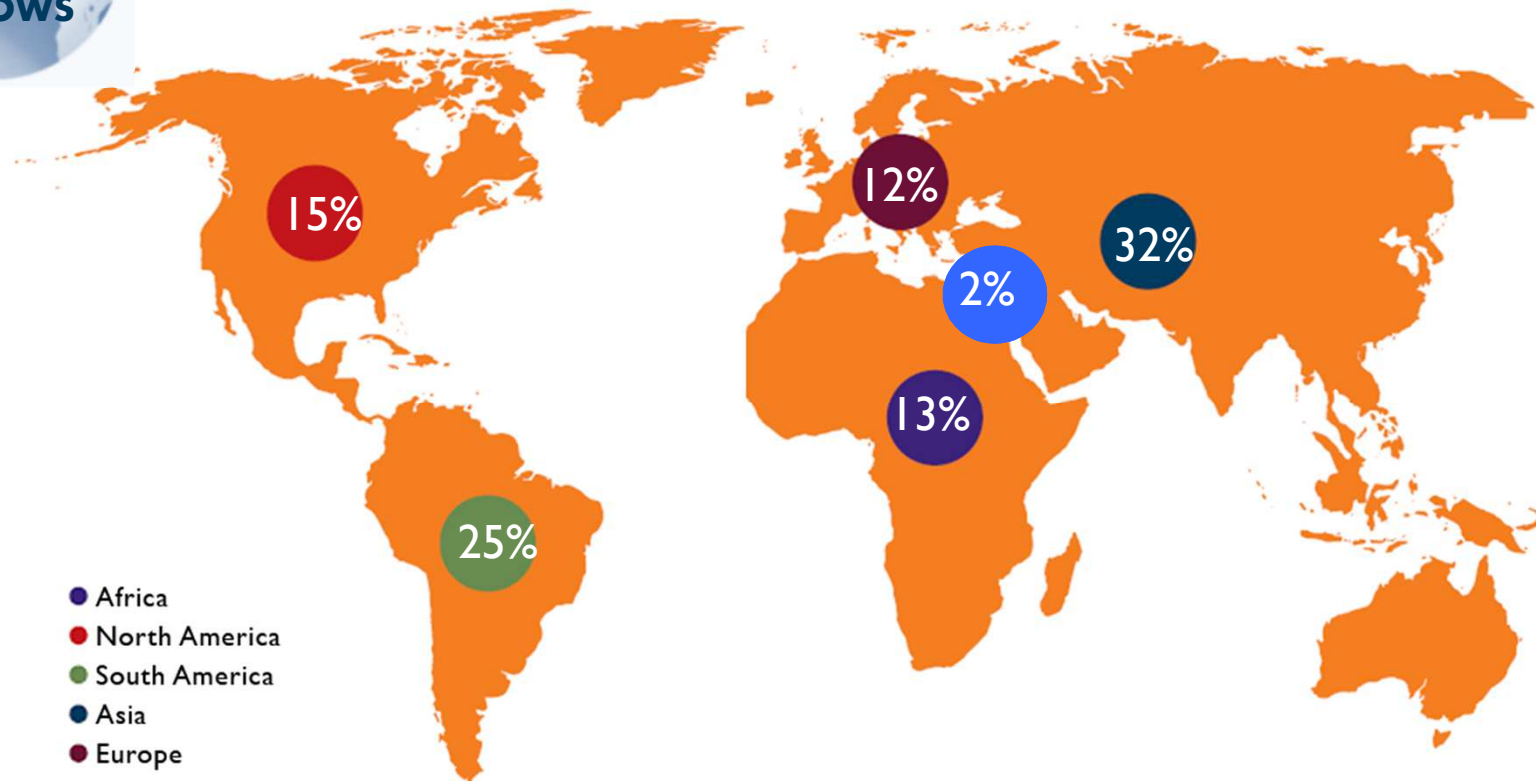


Ursula Sladek, Ashoka Fellow 2008
EWS Schöna



Jimmy Wales, Ashoka Fellow 2008
Wikipédia

3,000+ Fellows in 70+ countries



What Ashoka looks for?



New Idea



Social Impact



Entrepreneurialism



Creativity



Ethical Fibre

ASHOKA GLOBAL SELECTION PROCESS



What Ashoka provides?



A three year stipend



Access to a global community of Fellows



Connection to the Ashoka Support Network



Pro-bono support from corporate partners



94%

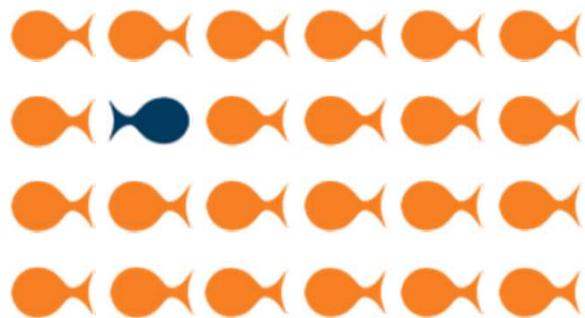
Of the Fellows are still leading
their project 5 years after their
nomination





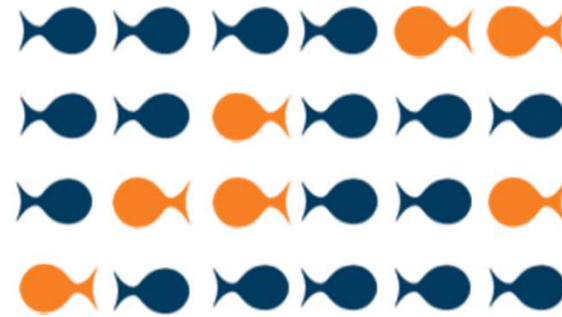
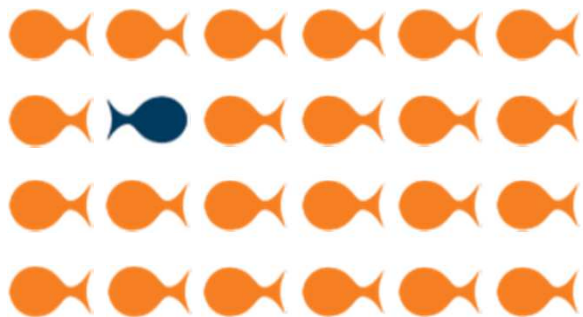
93%

Fellows have already been **copied**



2 Fellows in 3

Have influenced **national politics**
in their country





Ashoka Belgium

8 Fellows

16 Members of the Ashoka Support Network



Nutrition

Health

Integration

Environment

Education





ASHOKA

Everyone A Changemaker™

Ashoka Belgium

Anne Clark, Caroline Bettan

anneclark@ashoka.org, cbettan@ashoka.org